



Advancing eHealth
Interoperability

Quality label and certification processes
Handover Workshop
29 January 2015

Karima Bourquard
Director of Interoperability
IHE-Europe





- Objectives
- Overview of the results
- Recommendations
- Lessons learned
- Opportunities for adoption
- Conclusion



To design a European quality label or certification processes that supports eHealth interoperability in Europe.

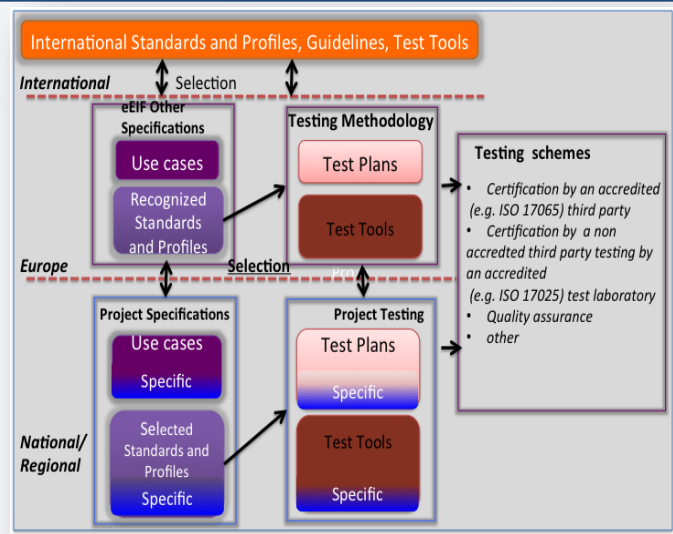
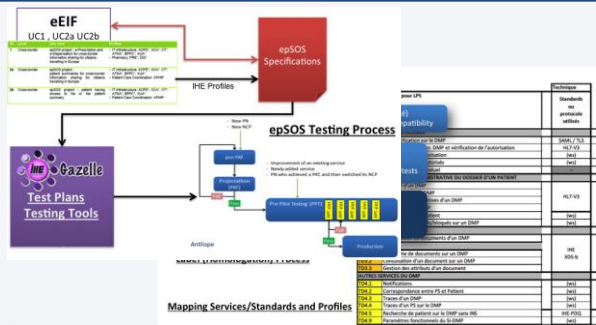
These processes shall operate in harmony with country specific quality label or certification processes

Stimulate the creation of European market based on the evolving European eHealth Interoperability Framework

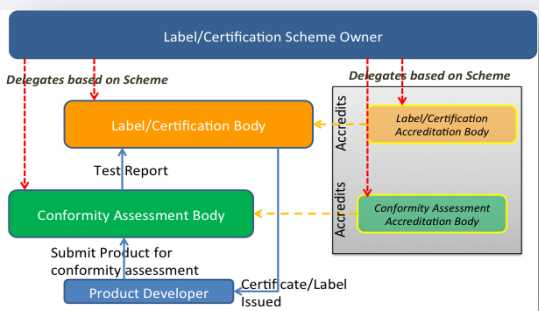
Harmonize the quality label and certification processes in Europe and among countries and regions

Propose a European interoperability quality label and certification processes that allows for flexible national or regional approaches





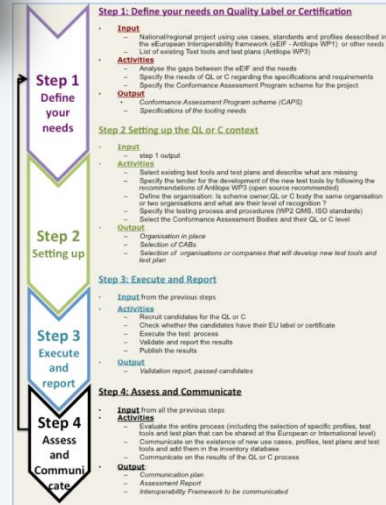
QL and C processes



Functional Model



Standards and EU Projects



Implementation guide



1

ORGANIZE

European governance

Representation of the involved stakeholders for establishing the consensus and the coordination of the activities

2

DEFINE

eHealth European Interoperability Framework
European Conformity assessment scheme
Test Methods
Accredited Conformance Assessment activity

3

MAINTAIN

Extend the eEIF (from countries or new challenges)
Update the test methods
Extend the Conformance assessment scheme



1

National and Regional Project leverage profiles recognized by the eEIF and use flexibility with needed national extensions

2

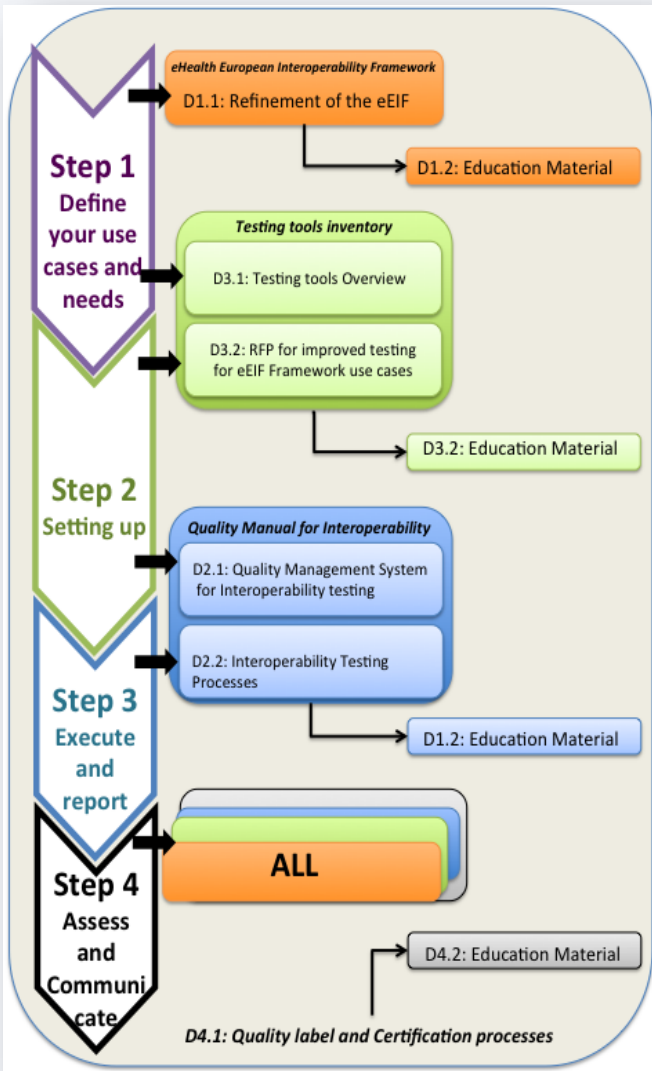
Ensure that the European level of label or certification may be used as an entry criteria at the national level

3

Organise acceptance and the recognition of profiles candidates in the eEIF based on local use cases



- Organisation
 - Complexity of the subject and difficulty to transfer the knowledge
 - Guideline is a good support when countries or projects want to develop a QL &C processes (for informed audience)
- Recommendations
 - Establish an independent testing laboratory
 - Use as much as possible the Antilope framework and adapt for local needs in order to reduce costs and duplication
 - Define a European Conformity Assessment Scheme



For a project or program

- Use the guideline to define your testing and quality label processes
- Reuse the frameworks developed at european level and national level
- Share your experience at national and european levels



Impacts and Benefit of the Quality label and certification (HITCH updated)

General	<ul style="list-style-type: none"> Improve the quality, safety, efficiency of health Reduce health disparities Ensure adequate privacy and security protections for personal health information Promote the conformity to the clinical regulation Decrease the treatment cost for the same level of quality
Functionality	<ul style="list-style-type: none"> Enhanced functionalities, harmonisation of systems Improve vendor reliability Support the end-user (prescriber) Improve quality of “content” and “output”
Interoperability	<ul style="list-style-type: none"> Improves interoperability (implementation of standards) Conformity with regulation Zero paper (electronic claim document/ Healthcare information) Reduces delay of reimbursement/ Healthcare information available to the right person
Financial	<ul style="list-style-type: none"> Receive financial incentives (users)



All Antilope deliverables are
available on the Antilope website
<http://www.antilope-project.eu/>