



**Dipak Kalra**

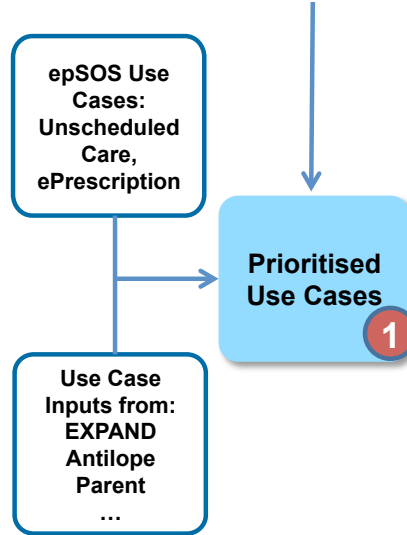
on behalf of the project consortium

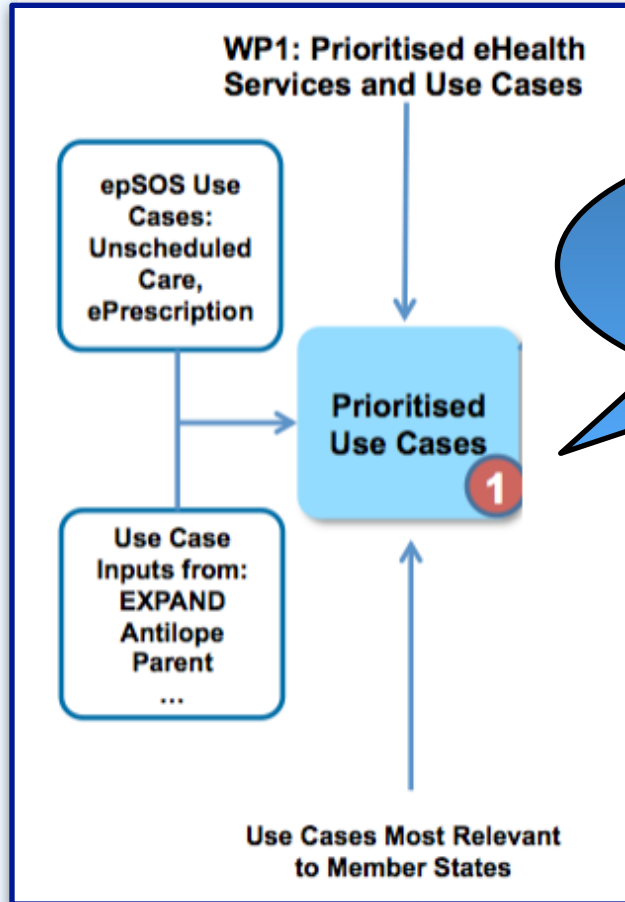
Project overview for the Antelope Handover Workshop

29th January 2015

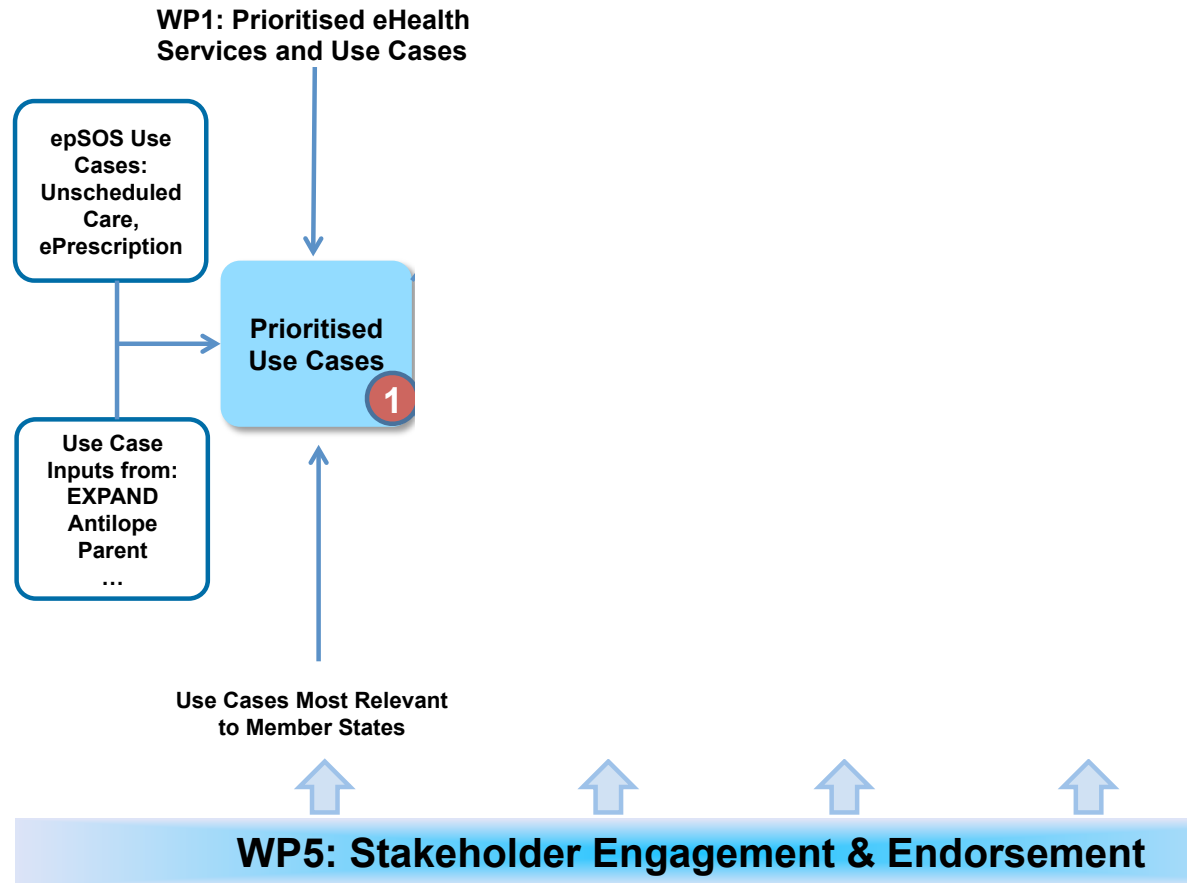


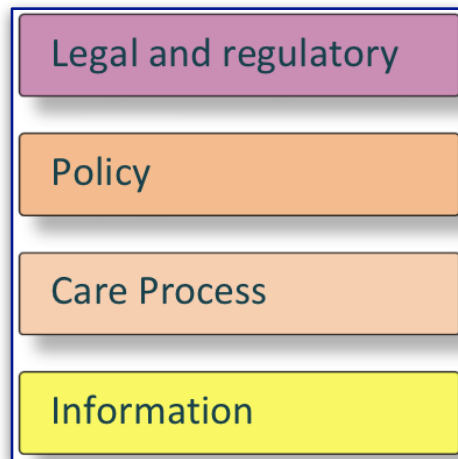
## WP1: Prioritised eHealth Services and Use Cases



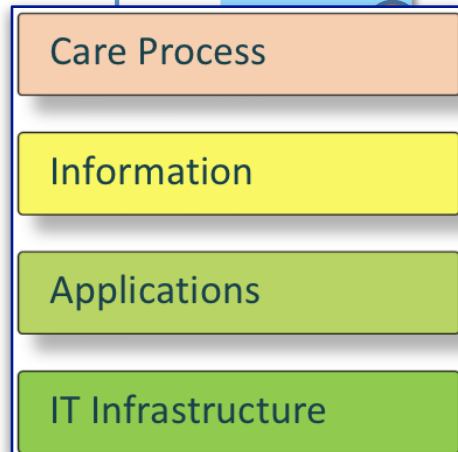


Make use of the Antilope/CEN Use Case template, Realisation scenario template





Prioritised Use Cases



### WP3: Adoption & Incentives Roadmap



- Regulators and advisors
- Policy makers
- Lawyers
- Healthcare managers
- Healthcare professionals
- (many others e.g. patients)

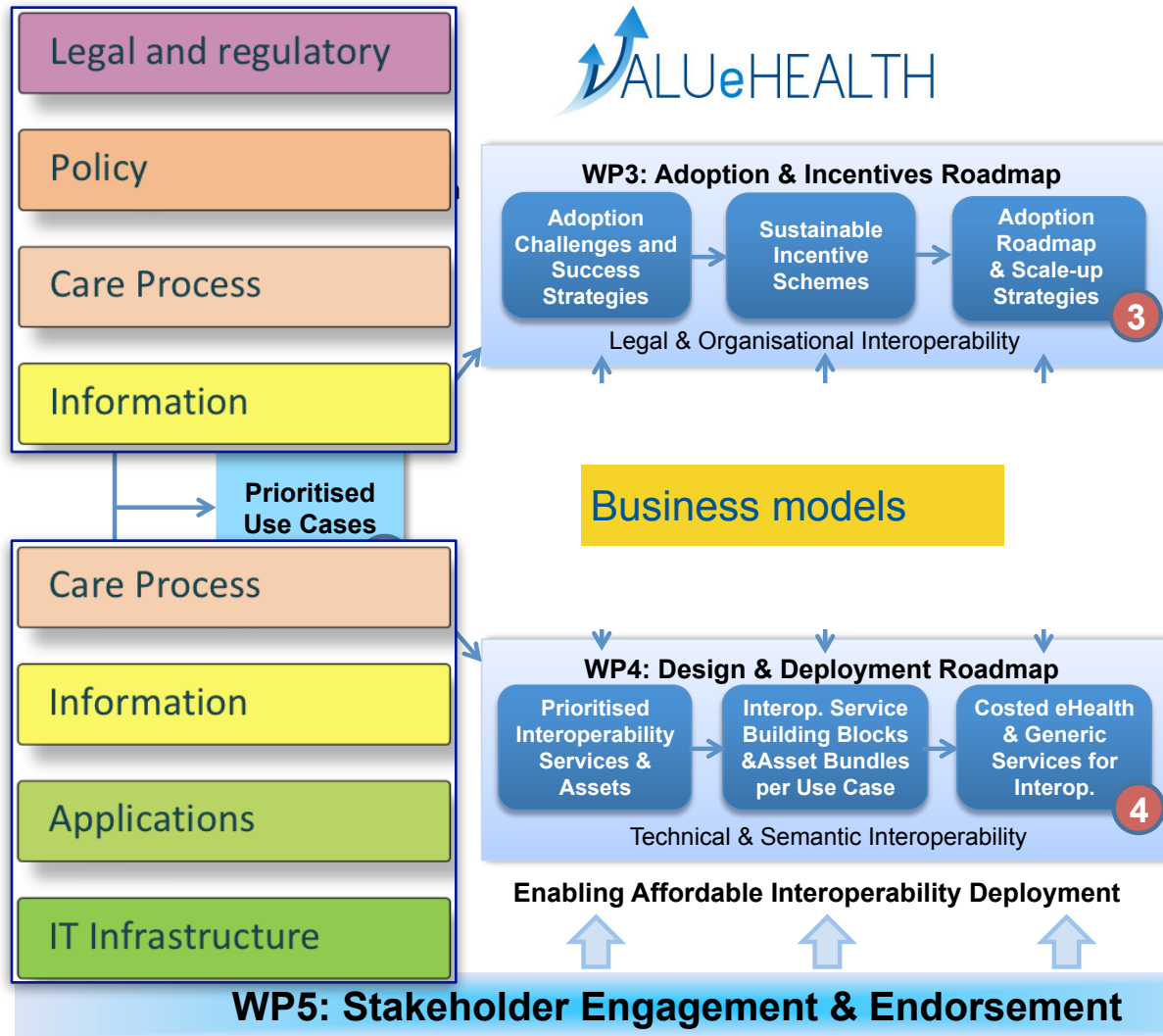
### WP4: Design & Deployment Roadmap

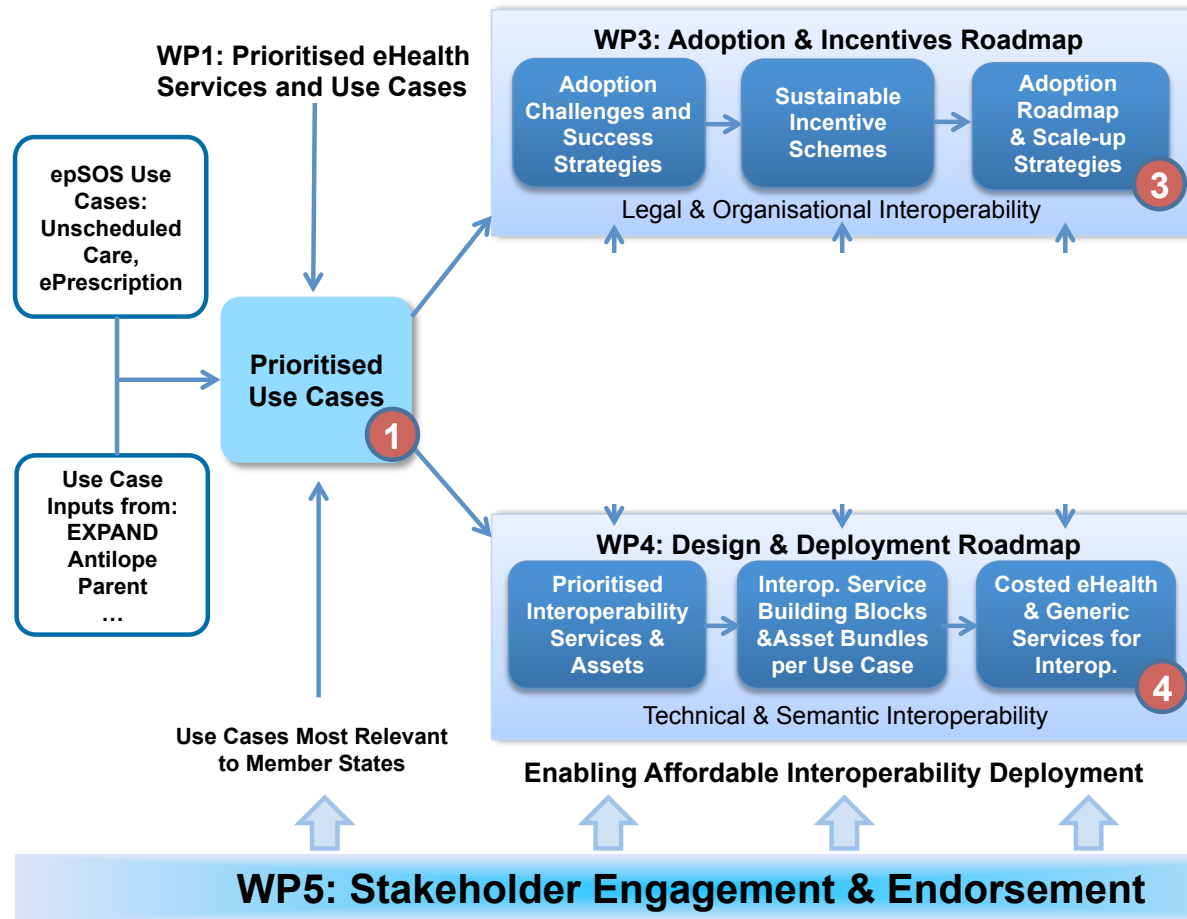


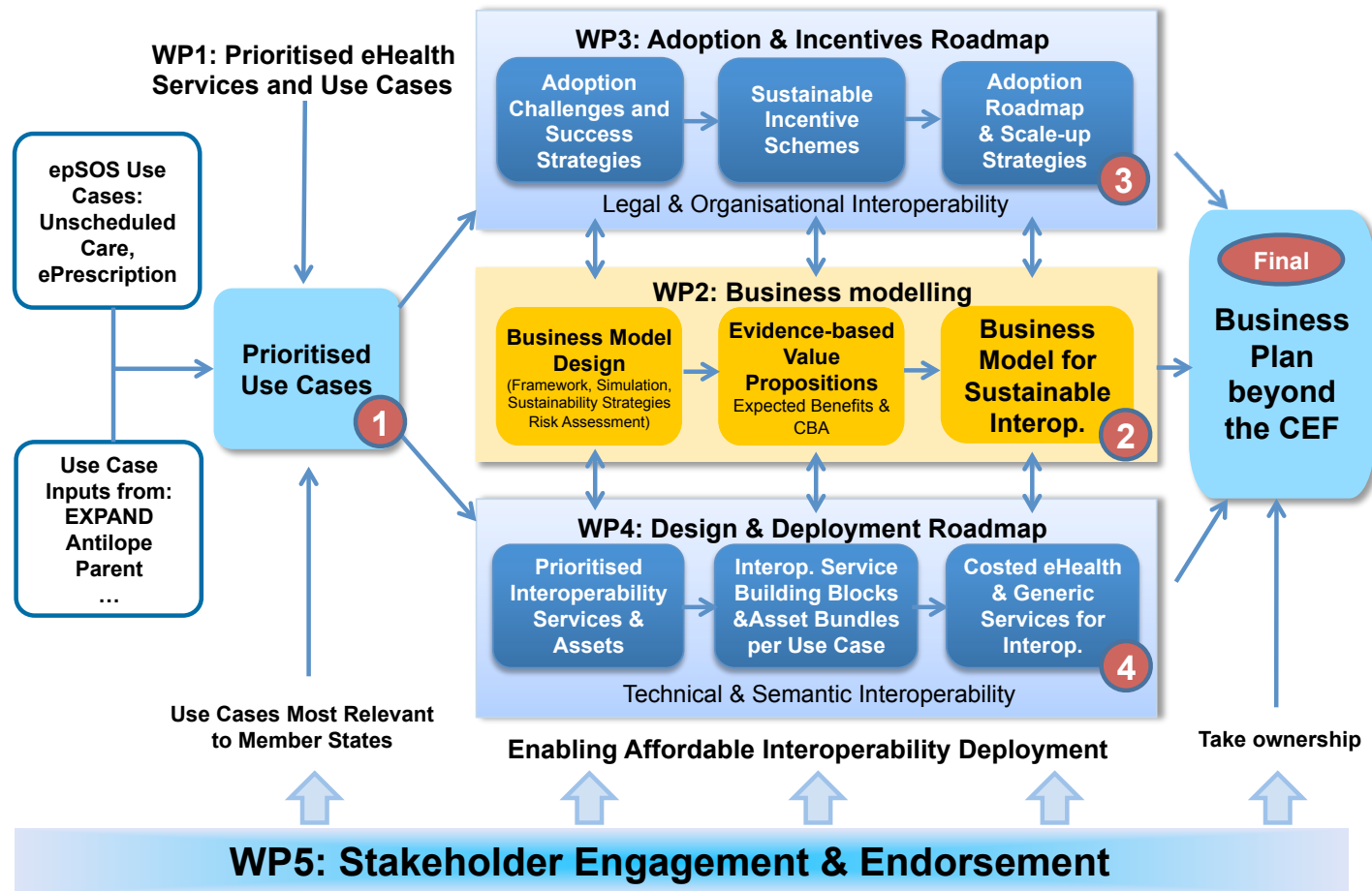
- Healthcare professionals (and many others)
- Healthcare managers
- Information analysts
- Information architects
- System architects
- Software developers
- System engineers
- (and many others)

Enabling Affordable Interoperability Deployment

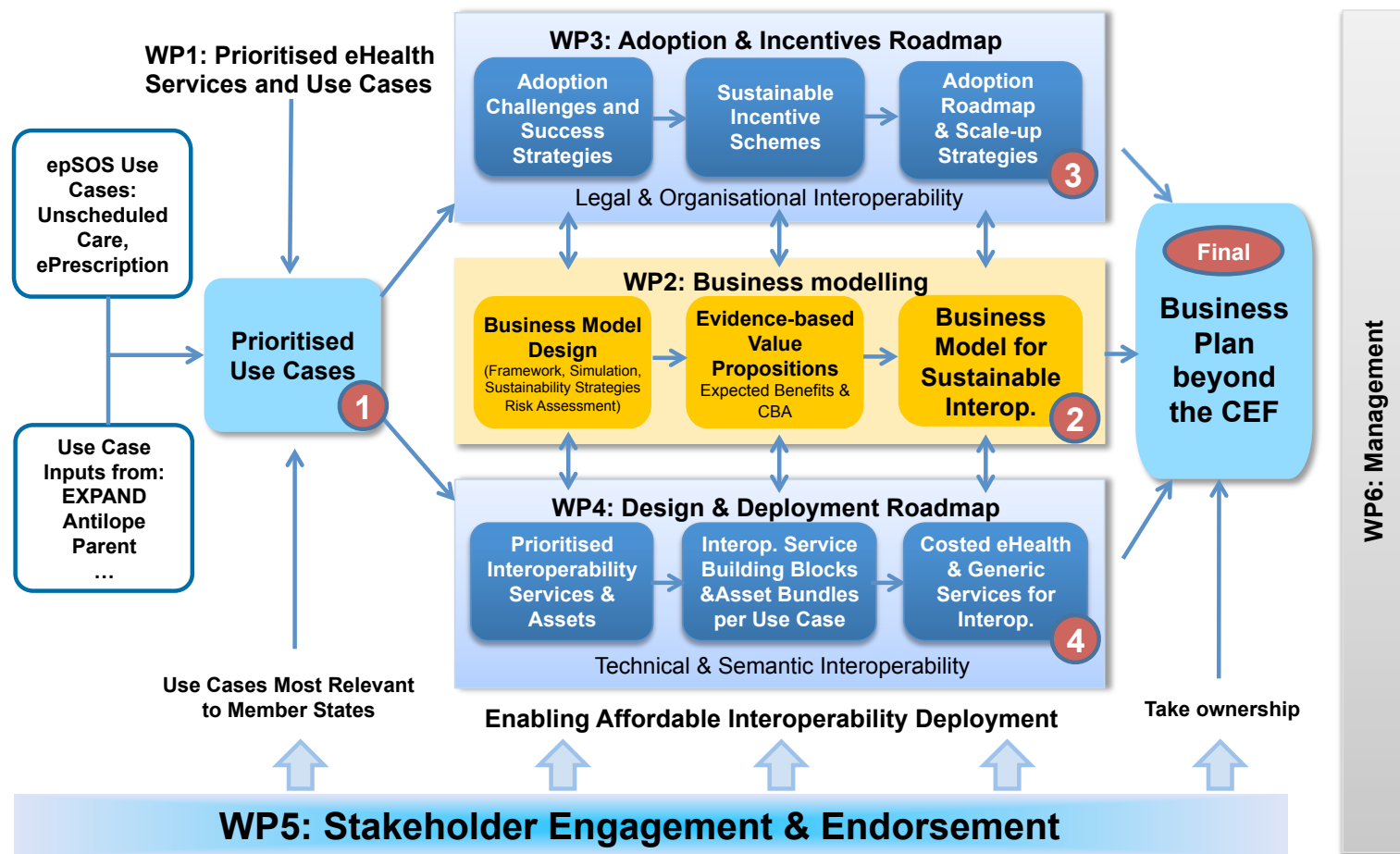
### WP5: Stakeholder Engagement & Endorsement











WP1: Prioritised eHealth Services and Use Cases

WP3: Adoption & Inc...  
Adoption Sustainability

Includes **specifying** quality management processes, quality labelling of assets, conformance testing, certification, use of testing tools

## WP4: Design & Deployment Roadmap

Prioritised Interoperability Services & Assets

Interop. Service Building Blocks & Asset Bundles per Use Case

Costed eHealth & Generic Services for Interop.

4

Technical & Semantic Interoperability

Use Cases Most Relevant to Member States

Technical & Semantic Interoperability

Enabling Affordable Interoperability Deployment

Take ownership

WP5: Stakeholder Engagement & Endorsement

WP1: Prioritised eHealth Services and Use Cases

WP3: Adoption & Incentives  
Adoption      Sustainability

## WP4: Design & Deployment Map

Prioritised Interoperability Services & Assets

Interoperability Building & Asset Deployment per Use Case

Includes **costing** quality management processes, quality labelling of assets, conformance testing, certification, use of testing tools

VALUE demonstration is essential

## WP2: Business modelling

**Business Model Design**  
(Framework, Simulation, Sustainability Strategies Risk Assessment)

**Evidence-based Value Propositions**  
Expected Benefits & CBA

**Business Model for Sustainable Interop.**