

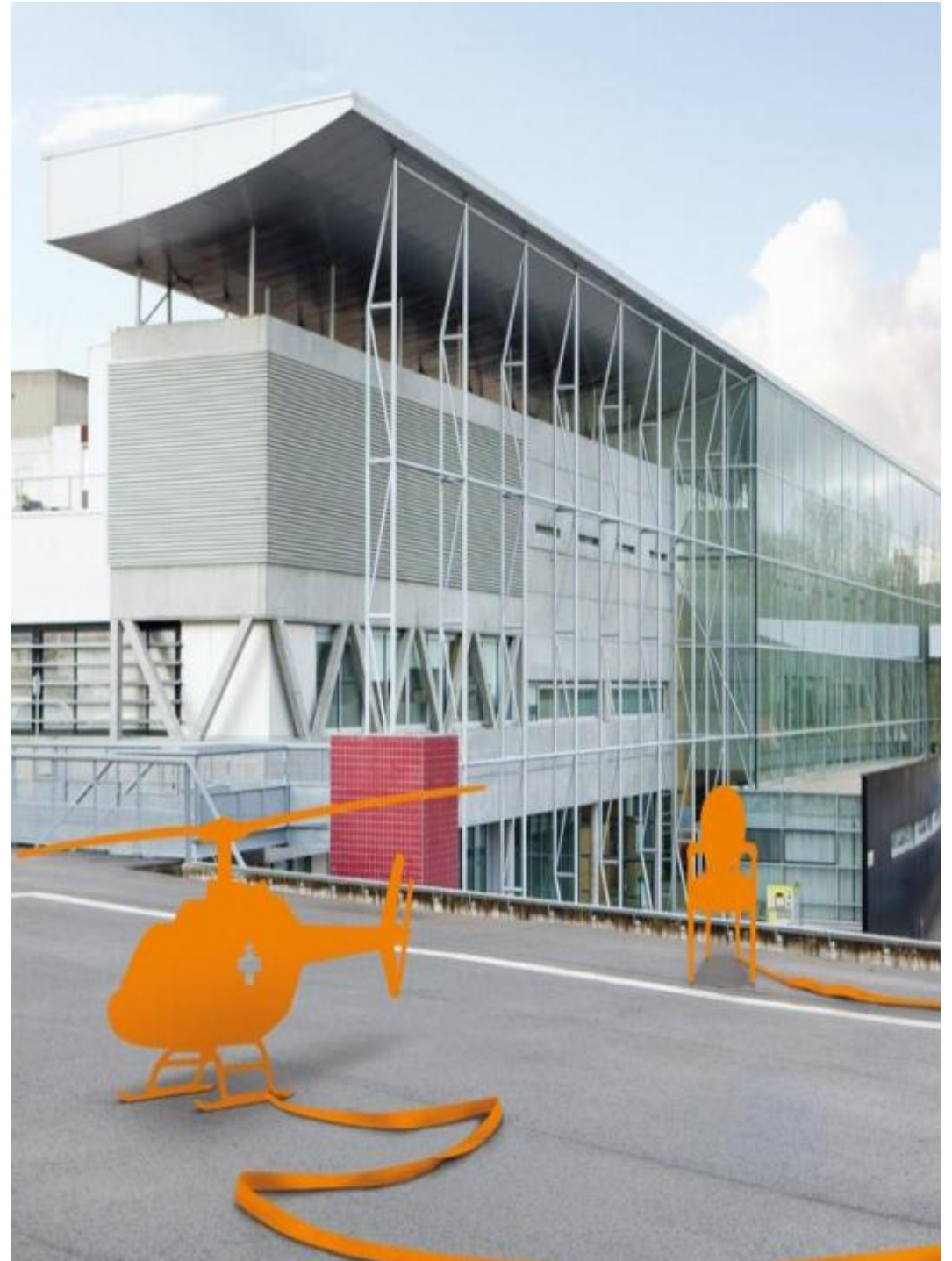
Why International eHealth Standards ?

Ian Hay

IMT/OLN/OLNC/SED

30th April 2014

ian.hay@orange.com



Orange Healthcare

objectives: for joining up healthcare

- **modernize the healthcare infrastructure** and equip healthcare facilities with communications solutions
- **connected medicine** for management of healthcare information
- **expertise in communications** to enable healthcare professionals to increase patient comfort and peace of mind

Developing healthcare ICT solutions in 3 areas

Services for professionals

Professionals-to-professionals

Infrastructure for coordination, collaboration, and information flow



Sharing of medical images

Remote monitoring

Professionals-to-patients

Patients keep in touch with healthcare professionals



Remote cardiac monitoring

Preventive services

Patient

improve prevention by self-management



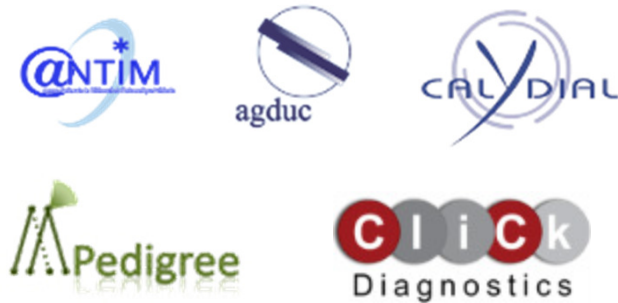
Drug authentication

Working with recognized leaders

Manufacturers



Professionals



Elite schools

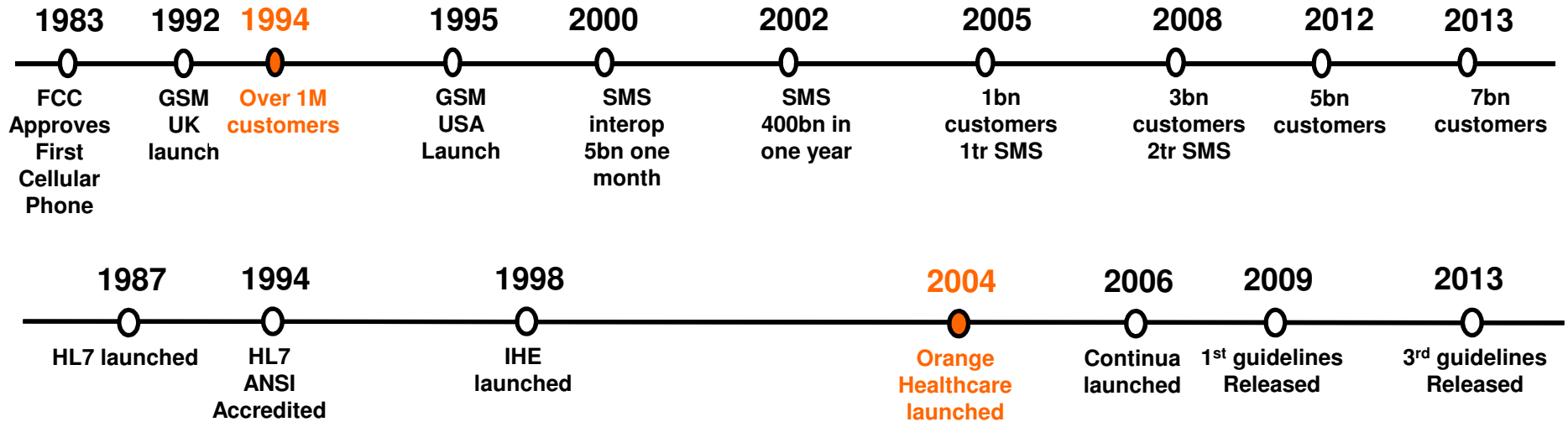


International Alliances



Growth of Health & GSM

7
BILLION



GSM Association founded in same year as HL7 (1987)

3GPP launched in same year as IHE (1998)

Similar start dates – different adoption rates

Some Perspective: Early days easily forgotten...

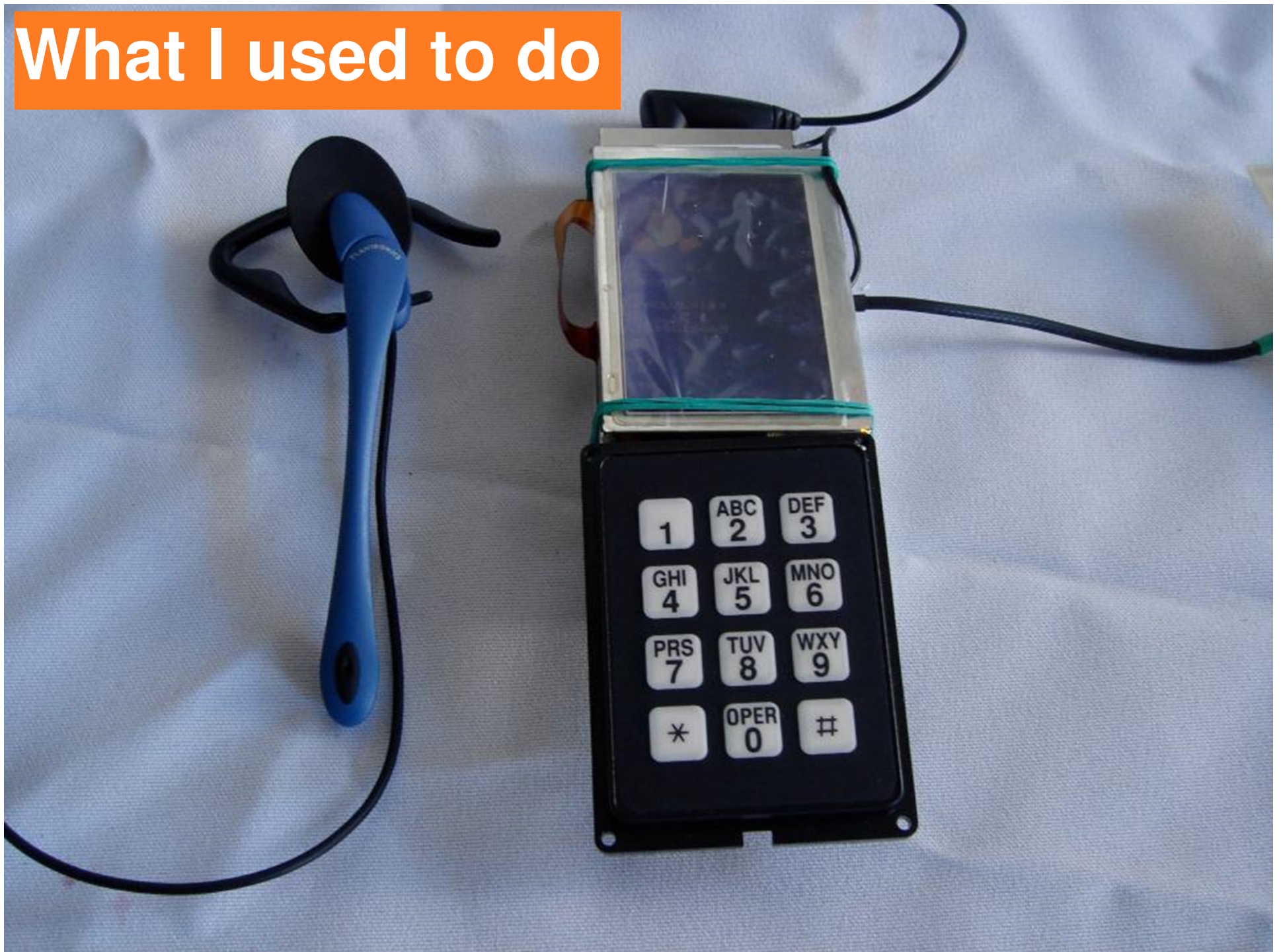


Remember?

1982: A phone for \$4,000 for just a few voice calls?

Unable to contact friends on Voda when you were Cellnet

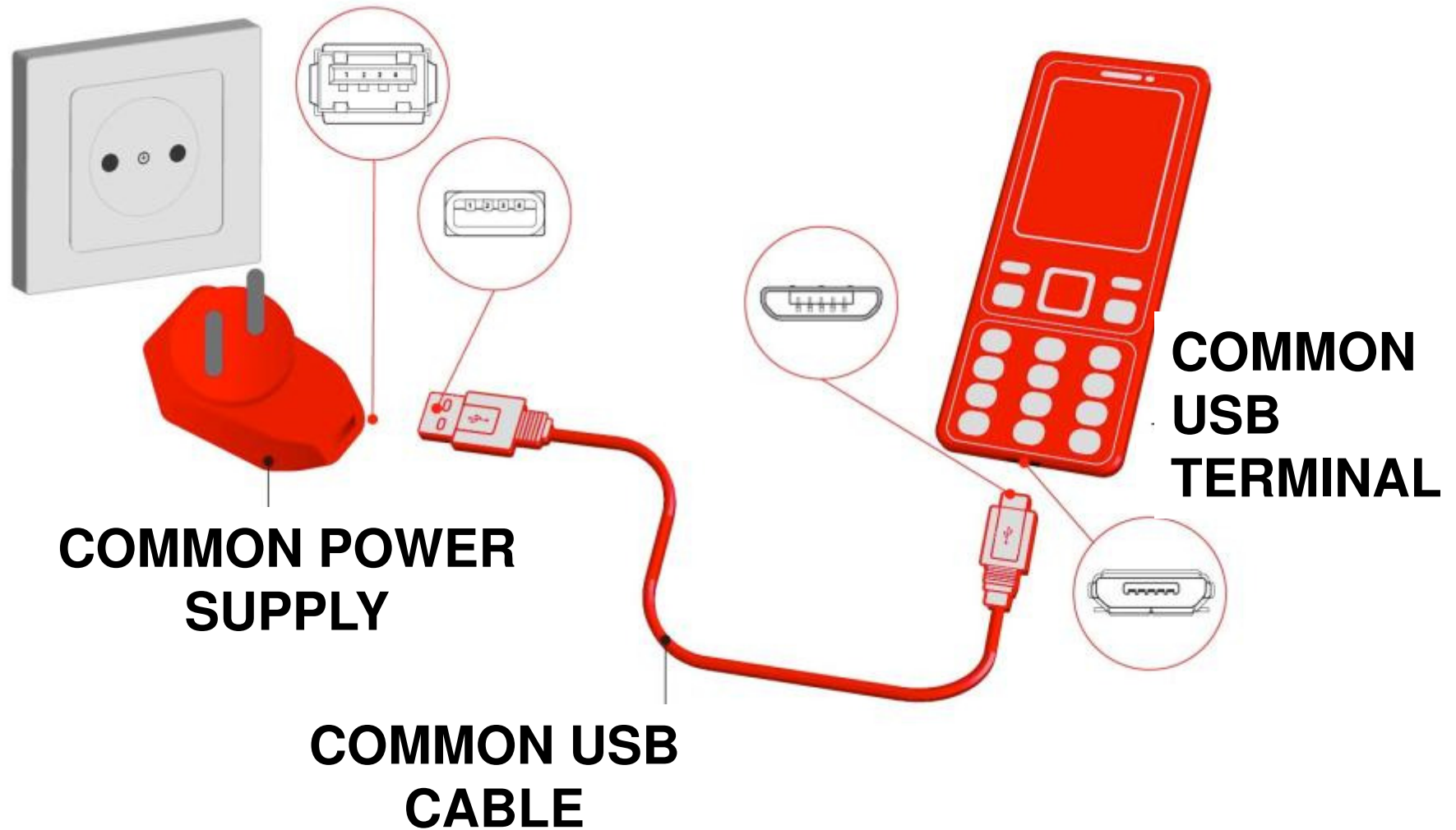
What I used to do



Good ideas can take time



Adopting a common (sense) standard



Standards Landscape



There are (too) many standards to choose from:

Variations on a theme with many interpretations

Everyone agrees on the need for 'them'

...but the lack of 'them' is often cited as a barrier

Many ways to implement



Everyone has their personal favourite

Perception

The way in which something is regarded,
understood, or interpreted

What people think standards people do



Corporate tourists



In reality meanwhile



Challenge

a call to prove or justify something

Too much Legacy equipment





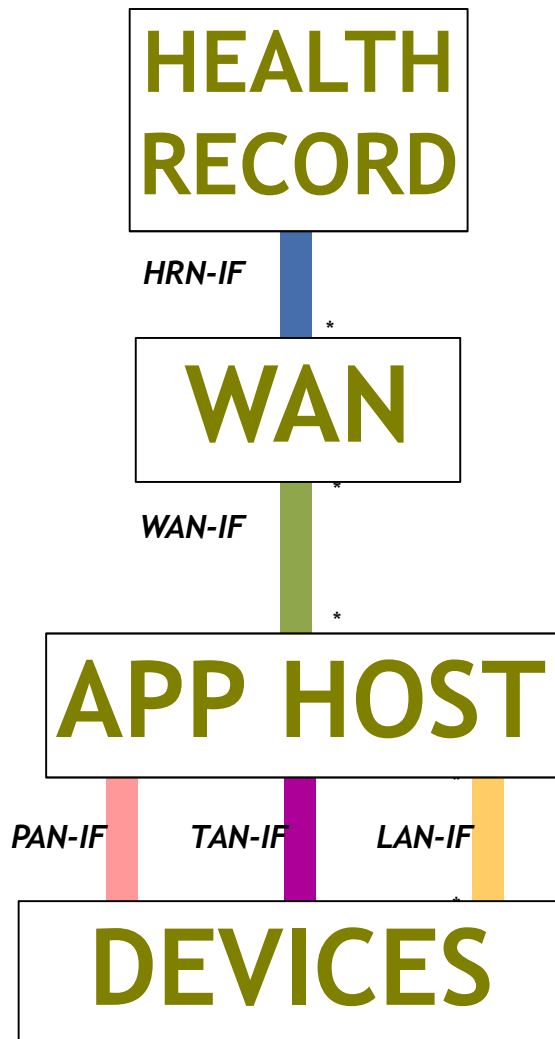
Security is Key

HOMELAND



©2011 Showtime Networks Inc., a CBS Company. All rights reserved. Showtime Networks Inc., 1633 Broadway, New York, NY 10019. SHOWTIME is a registered trademark of Showtime Networks Inc., a CBS Company. "Homeland" ©2011 Showtime Networks Inc. All rights reserved.

Common Interfaces in Continua



<ul style="list-style-type: none"> TLS v1.0 IHE XDM (S/MIME) IHE XUA, IHE XUA++ IHE PIX IG for HL7 CDA R2 Consent Directive IHE Document Encryption (DEN) Profile IHE ATNA 	<ul style="list-style-type: none"> Confidentiality, Integrity and Authentication Confidentiality, Integrity and Authentication Entity authentication Identity management Consent Management Consent Enforcement Auditing
<ul style="list-style-type: none"> WS-I BSP (TLS v1.0) WS-I BSP (WS-Security + SAML 2.0) IG for HL7 CDA R2 Consent Directive XML Encryption Specification IHE ATNA OAuth v2.0 	<ul style="list-style-type: none"> Confidentiality, Integrity, authentication Entity authentication Consent Management Consent Enforcement Auditing Authorization
<ul style="list-style-type: none"> Zigbee security 	<ul style="list-style-type: none"> Confidentiality, Integrity and Authentication
<ul style="list-style-type: none"> Bluetooth security 	<ul style="list-style-type: none"> Confidentiality, Integrity and Authentication
<ul style="list-style-type: none"> NFC security 	<ul style="list-style-type: none"> Confidentiality, Integrity and Authentication



Guidelines - Certification - Recognizable Logo

Guidelines
strict interoperability

Certification and Logo
recognizable - promise of interoperability with other certified products

SOFTWARE



PACKAGING



APPLICATIONS



SUBSTRATES



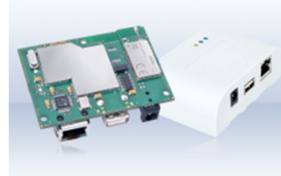
Certified devices (>90 in total)



TOSHIBA



blue giga

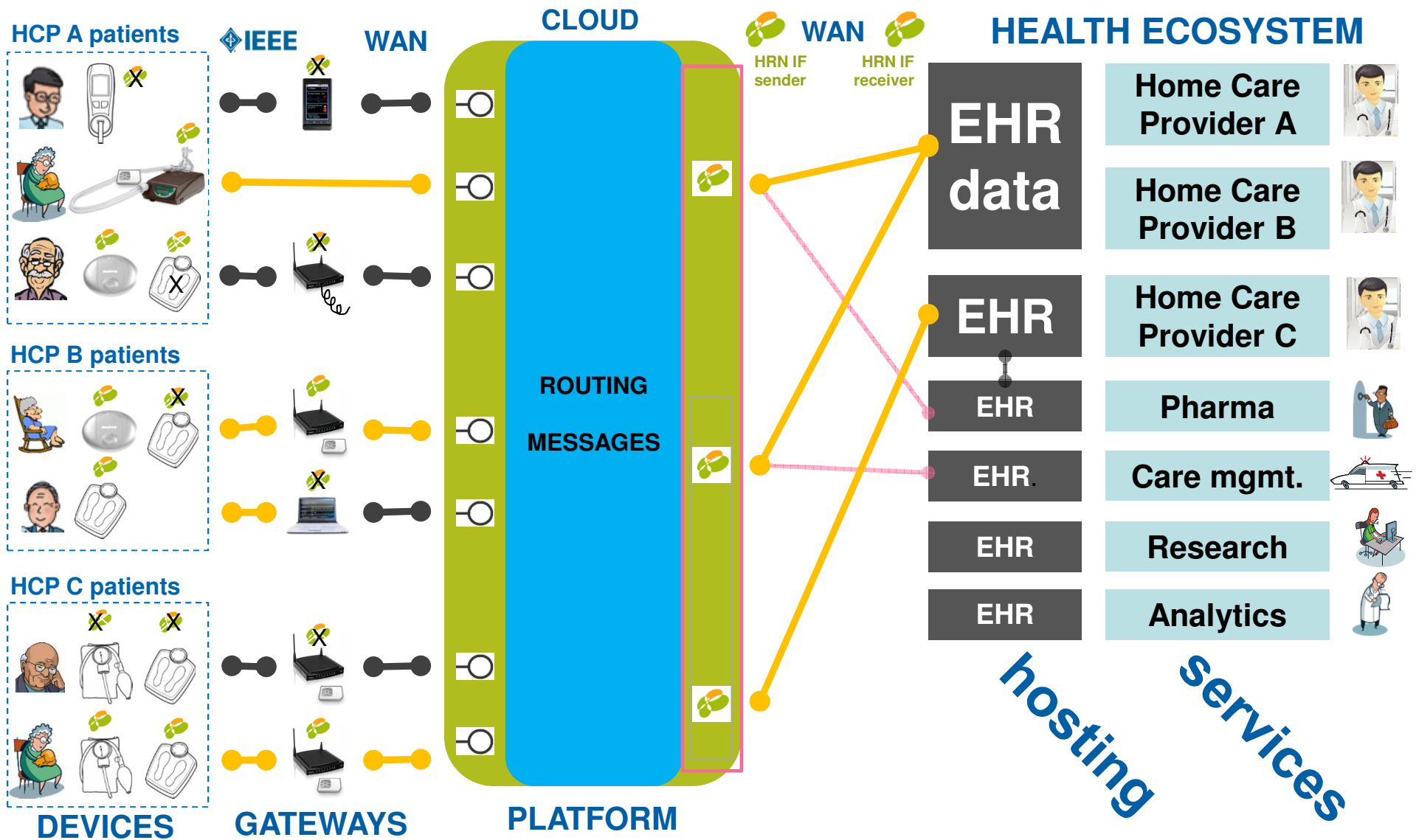


Panasonic
ideas for life



Breaking Down Interoperability Barriers

INCREMENTALLY





**KEEP
CALM
AND
ADOPT
(INTEROPERABLE)
STANDARDS**

A photograph of a person's legs from the waist down, standing on a wooden pier. The person is wearing light-colored shorts and sandals. A white bandage is on the left knee. The background shows the ocean and a clear sky.

Thanks



Ian Hay

Head of Emerging Ecosystems

twitter: @ikisai / @OrangeHCare

<http://healthcare.orange.com>